

2025 SPS PATIENT SYMPOSIUM

CORPORATE SPONSORSHIP PACKET

July 19-20, 2025



THE 2025
STIFF PERSON SYNDROME
PATIENT SYMPOSIUM

2025 STIFF PERSON SYNDROME SYMPOSIUM

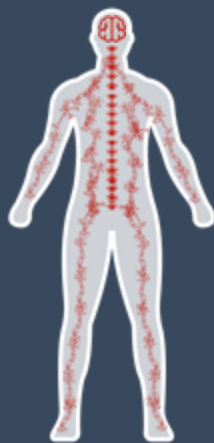
July 19-20, 2025 | Windsor Locks, CT & Online



WHAT IS STIFF PERSON SYNDROME?

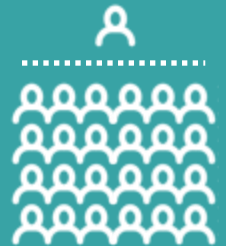
WHAT IS STIFF PERSON SYNDROME?

Stiff Person Spectrum Disorder (SPSD), also known as Stiff Person Syndrome (SPS), is a neurological disease with autoimmune features. Usually progressive over time, SPS symptoms include severe muscle spasms, rigid limbs and body, debilitating pain, and chronic anxiety*.



SPS AFFECTS 1-2 PEOPLE PER 1,000,000*

The actual number of people suffering from SPS may be higher due to frequent misdiagnosis and the long process it takes to reach an accurate diagnosis*



ON AVERAGE, IT TAKES 7 YEARS TO BE DIAGNOSED WITH SPSP*.



SPS CAN OFTEN BE MISDIAGNOSED AS OTHER DISEASES, RESULTING IN DELAYED TREATMENT PLANS FOR PATIENTS.

TODAY, THERE IS NO CURE FOR SPS.



THERE IS AN URGENT NEED FOR BETTER TREATMENTS.

OCCURRENCES OF SPS:

- Females are affected twice as often as males*.
- Patients most commonly develop symptoms between the ages of 40-50*.
- 5% of cases of SPS are reported in children*.

* Source: www.hopkinsmedicine.org/health/conditions-and-diseases/stiff-person-syndrome-sps

PATIENTS CAN BE DISABLED, UNABLE TO WORK, OR CARE FOR THEMSELVES.



2025 STIFF PERSON SYNDROME SYMPOSIUM

July 19-20, 2025 | Windsor Locks, CT & Online



THE STIFF PERSON SYNDROME SYMPOSIUM

WHAT IS IT:

The SPSRF's annual symposium offers engaging presentations, discussions, and networking opportunities for in-person and online audience members. It provides new insights and practical tools for managing SPS.

WHY IS IT IMPORTANT:

The Annual SPS Symposium is designed to foster intimate and supportive exchanges among patients, caregivers, and families, ensuring that every voice is heard and valued.

"This was one of the BEST SPS events I've EVER had a chance to participate in! From the bottom of my heart, THANK YOU for hosting this event for our community!"

- Melanie C., 2024 participant

2024 PRESENTATIONS & PANEL TOPICS

The leading global experts in SPS shared insights on:

- The Future of SPS Research
- The SPS Global Registry
- Hematopoietic Stem Cell Transplant in SPS
- SPS Community Support
- SPS Self-Care Toolbox



2024 SYMPOSIUM REGISTRATIONS

75+ IN-PERSON
250+ ONLINE

GLOBAL PARTICIPANTS

The 2024 SPS Symposium brought attendees together from over 20 countries, from Australia to Norway and everywhere in between!



2024 SPONSORS:

Hartford
HealthCare



nufactor
A SPECIALTY INFUSION COMPANY



Homewatch
CareGivers®

Jim & Beverly
Gibbons

IVX HEALTH

2025 STIFF PERSON SYNDROME SYMPOSIUM

July 19-20, 2025 | Windsor Locks, CT & Online



THE 2024 STIFF PERSON SYNDROME SYMPOSIUM

Patient, caregiver, and speaker photos from our 2024 SPS Symposium.



Attending the SPS Symposium offers patients and caregivers a unique opportunity to share their experiences directly with leading researchers and clinicians, fostering a deeper understanding of Stiff Person Syndrome. Their firsthand insights are invaluable in shaping future research, improving treatment strategies, and building a stronger, more informed community.

2025 STIFF PERSON SYNDROME SYMPOSIUM



THE POWER OF PROGRESS

The Stiff Person Syndrome Research Foundation (SPSRF) extends a warm invitation for you to become a sponsor of our 2025 Stiff Person Syndrome Symposium.

As a neurological condition affecting approximately one to two people in a million, SPS presents extraordinary challenges, from severe muscle spasms and rigidity to debilitating pain and emotional distress. However, the actual number of people suffering from SPS may be higher than these reported rates due to the frequent misdiagnosis of the condition and the historically long process it takes to reach an accurate diagnosis. Many patients experience symptoms for years before receiving the proper diagnosis, complicating treatment and support.

With your support, we aim to empower the SPS community and drive meaningful progress toward improved quality of life and groundbreaking medical discoveries.

The 2025 Symposium will build on the successes of previous years, delivering cutting-edge knowledge, fostering collaboration between experts, and strengthening the bonds within our community.

Sponsorship is an opportunity to contribute to this critical event and to become part of the solution to this rare disease.

We value your support, which will be visible throughout the event and in our communications, underscoring your commitment to positive change, corporate responsibility, and the profound impact that hope and empathy can bring to those living with SPS.

We invite you to join us in making a lasting difference in the lives of those affected by this rare disease.

With appreciation and hope,

Sincerely,
Dr. Tara Zier
Founder & CEO, SPS Patient
The Stiff Person Syndrome Research Foundation



2025 STIFF PERSON SYNDROME SYMPOSIUM

July 19-20, 2025 | Windsor Locks, CT & Online



CORPORATE SPONSORSHIP OPPORTUNITIES

THE PERKS	PROGRESS PARTNERS	COLLABORATORS FOR RESEARCH	INNOVATORS CIRCLE	VISION PIONEERS
Direct exposure & interactions with world renowned-physicians, researchers, & industry partners	✓	✓	✓	✓
Showcase your company with a dedicated table at the symposium	✓	✓	✓	✓
Prominent brand visibility with your logo featured on the symposium bag	✓	✓	✓	✓
Logo displayed on all tabletop signage	✓	✓	✓	✓
Dedicated ad in the official symposium program	✓	✓	✓	✓
Extended digital exposure through inclusion in our social media campaigns & newsletters	✓	✓	✓	✓
Special mention during opening remarks		✓	✓	✓
Premium podium signage			✓	✓
Dedicated recognition as a featured sponsor across our social media platforms				✓
	\$2,500	\$5,000	\$10,000	\$25,000

IN-KIND DONATIONS

If you have an item or experience to donate, we'll recognize it at the symposium and/or in our marketing and symposium package.

To donate in support of the 2025 SPS Symposium, email The SPSRF at events@stiffperson.org or visit stiffperson.org/2025Symposium for more information.

2025 STIFF PERSON SYNDROME SYMPOSIUM

July 19-20, 2025 | Windsor Locks, CT & Online



SPONSORSHIP OPPORTUNITIES

PROGRESS PARTNERS - \$2,500

This level includes direct exposure & interactions with renowned physicians, researchers, & industry partners, showcase your company with a dedicated table at the symposium, prominent brand visibility with your logo featured on the symposium bag, logo displayed on all tabletop signage, dedicated ad in the official symposium program, extended digital exposure through inclusion in our social media campaigns & newsletters.

COLLABORATORS IN RESEARCH - \$5,000

The benefits of this level include those within the Progress Partners level and a special mention during opening remarks.

INNOVATORS CIRCLE- \$10,000

The benefits of this level include those within the Collaborators In Research level plus premium podium signage.

VISION PIONEERS- \$25,000

The benefits of this level include those within the Innovator Circle plus dedicated recognition as a featured sponsor across our social media platforms.

SPONSOR INFORMATION

Corporate Name: _____

Sponsor Contact: _____

Address: _____

Phone: _____ E-mail: _____

Website: _____

Event sponsorship level:

VISION
PIONEERS
\$25,000

INNOVATORS
CIRCLE
\$10,000

COLLABORATORS
IN RESEARCH
\$5,000

PROGRESS
PARTNERS
\$2,500

IN-KIND
GIFTS &
DONATIONS

Deadline for sponsorship commitment & submission of logo, program ad & payment: March 1, 2025

Deadline to receive collateral for symposium bags: June 1, 2025

Visit stiffperson.org/2025Symposium for more information or email events@stiffperson.org.